



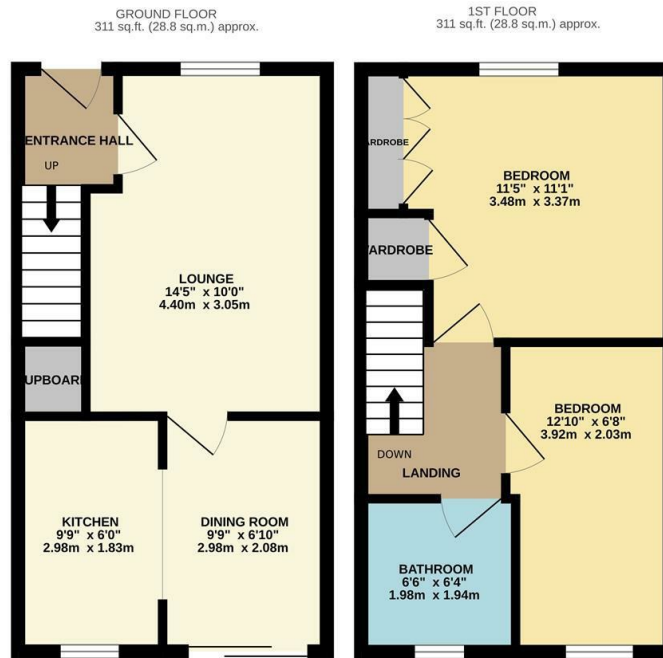
Denby Grange, Harlow, CM17 9PZ  
Guide Price £300,000

2 1 1

# Denby Grange, Harlow, CM17 9PZ

\*Guide Price £300,000 to £325,000\*

Offered with NO CHAIN is this two bedroom terraced family home with a driveway to the front, located in a quiet cul-de-sac. On the ground floor there is an entrance hallway leading to a lounge and a dining room, which opens onto the kitchen with a range of fitted wall and base units, whilst upstairs there are two bedrooms, with fitted wardrobes to the master and a family bathroom with a white three piece suite. Outside, the rear garden is mainly laid to lawn with a patio area, with the driveway to the front. Denby Grange is located just off Old Hall Rise, within walking distance of excellent local schools, shops and open fields.



DGREYLANDJOHNSON

TOTAL FLOOR AREA: 621 sq.ft. (57.7 sq.m.) approx.

Whilst every attempt has been made to ensure the accuracy of the floorplan contained here, measurements of doors, windows, rooms and any other items are approximate and no responsibility is taken for any error, omission or mis-statement. This plan is for illustrative purposes only and should be used as such by any prospective purchaser. The services, systems and appliances shown have not been tested and no guarantee as to their operability or efficiency can be given.  
Made with Metropix ©2025



Energy Efficiency Rating		Environmental Impact (CO <sub>2</sub> ) Rating	
Current	Potential	Current	Potential
Very energy efficient - lower running costs		Very environmentally friendly - lower CO <sub>2</sub> emissions	
(92 plus) <b>A</b>		(82 plus) <b>A</b>	
(81-91) <b>B</b>		(81-91) <b>B</b>	
(69-80) <b>C</b>		(69-80) <b>C</b>	
(55-68) <b>D</b>		(55-68) <b>D</b>	
(39-54) <b>E</b>		(39-54) <b>E</b>	
(21-38) <b>F</b>		(21-38) <b>F</b>	
(1-20) <b>G</b>		(1-20) <b>G</b>	
Not energy efficient - higher running costs		Not environmentally friendly - higher CO <sub>2</sub> emissions	
England & Wales	EU Directive 2002/91/EC	England & Wales	EU Directive 2002/91/EC

These particulars, whilst believed to be accurate are set out as a general outline only for guidance and do not constitute any part of an offer or contract. Intending purchasers should not rely on them as statements of representation of fact, but must satisfy themselves by inspection or otherwise as to their accuracy. No person in this firm's employment has the authority to make or give any representation or warranty in respect of the property.

T. 01279 216216 E. info@rjestateagents.co.uk

1 Acorn Mews, Harlow, Essex, CM18 6NA www.rjestateagents.co.uk